

TP HOLLOW WALL ANCHORS

TP HAB & TP HA

■ Product Description

- Anchor for hollow elements as airbrick, dry wall, plaster wall, etc.
- Maximum load in thin walls due to its expansion design.
- Easy, fast and controlled installation. Requires a special tool.
- Previous installation or thought out the material to be fixed.
- Available special pliers to use in difficult accessibility places.
- After Installation screw can be replaced with another same metric size screw.

TP HAB: TP Hollow Wall Anchor with Screw (Zinc Plated)

Item Number	Description	Size*
TP 6694	TP Hollow Wall Anchor with Screw (Zinc Plated)	M04 x 21
TP 6695	TP Hollow Wall Anchor with Screw (Zinc Plated)	M04 x 32
TP 6300	TP Hollow Wall Anchor with Screw (Zinc Plated)	M04 x 38
TP 6696	TP Hollow Wall Anchor with Screw (Zinc Plated)	M04 x 46
TP 6697	TP Hollow Wall Anchor with Screw (Zinc Plated)	M04 x 59
TP 6698	TP Hollow Wall Anchor with Screw (Zinc Plated)	M05 x 37
TP 6699	TP Hollow Wall Anchor with Screw (Zinc Plated)	M05 x 52
TP 6700	TP Hollow Wall Anchor with Screw (Zinc Plated)	M05 x 65
TP 6701	TP Hollow Wall Anchor with Screw (Zinc Plated)	M05 x 80
TP 6308	TP Hollow Wall Anchor with Screw (Zinc Plated)	M06 x 37
TP 6703	TP Hollow Wall Anchor with Screw (Zinc Plated)	M06 x 52
TP 6704	TP Hollow Wall Anchor with Screw (Zinc Plated)	M06 x 65
TP 6705	TP Hollow Wall Anchor with Screw (Zinc Plated)	M06 x 80



*(Diameter) x (Length) - mm

TP HA : TP Hollow Wall Anchor Without Screw (Zinc Plated)

Item Number	Description	Size*
TP 6706	TP Hollow Wall Anchor Without Screw (Zinc Plated)	M04 x 21
TP 6707	TP Hollow Wall Anchor Without Screw (Zinc Plated)	M04 x 32
TP 6313	TP Hollow Wall Anchor Without Screw (Zinc Plated)	M04 x 38
TP 6708	TP Hollow Wall Anchor Without Screw (Zinc Plated)	M04 x 46
TP 6709	TP Hollow Wall Anchor Without Screw (Zinc Plated)	M04 x 59
TP 6710	TP Hollow Wall Anchor Without Screw (Zinc Plated)	M05 x 37
TP 6711	TP Hollow Wall Anchor Without Screw (Zinc Plated)	M05 x 52
TP 6712	TP Hollow Wall Anchor Without Screw (Zinc Plated)	M05 x 65
TP 6713	TP Hollow Wall Anchor Without Screw (Zinc Plated)	M05 x 80
TP 6714	TP Hollow Wall Anchor Without Screw (Zinc Plated)	M06 x 37
TP 6715	TP Hollow Wall Anchor Without Screw (Zinc Plated)	M06 x 52
TP 6716	TP Hollow Wall Anchor Without Screw (Zinc Plated)	M06 x 65
TP 6717	TP Hollow Wall Anchor Without Screw (Zinc Plated)	M06 x 80
TP 6718	TP Hollow Wall Anchor Without Screw (Zinc Plated)	M08 x 65



*(Diameter) x (Length) - mm

■ Application

- Fixing air conditioning systems, television devices, frames, furniture, etc.

■ Anchor Material

No.	Name	Size	Component	Material
1	TP HAB	M4 to M6	Bolt Sleeve	Zinc plated steel $\geq 5 \mu\text{m}$ Zinc plated steel $\geq 5 \mu\text{m}$
2	TP HA	M4 to M8	Sleeve	Zinc plated steel $\geq 5 \mu\text{m}$

■ Accessories

Setting tool used for Hollow wall anchor (TP STG & TP STP)

Item Number	Description	Used for Sizes
TP 6326	TP Gun for Hollow Wall Anchor (TP STG)	M4, M5, M6, M8
TP 6327	TP Pliers for Hollow Wall Anchor (TP STP)	M4, M5, M6



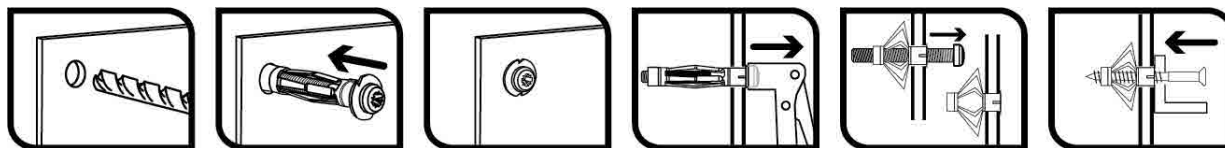
TP STG



TP STP

■ Installation Procedure

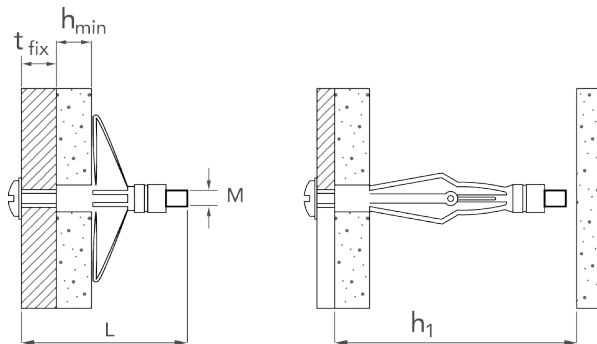
- Drill base material to the specified diameter. Do not use hammer drill option
- Insert the bolt with the hand until it is fully attached to the base material. Hammer can be used if necessary
- Place the bolt into the installation gun. Push the trigger until the anchor is fully expanded
- Remove the gun and unthread the bolt
- Place the material to be fixed. Introduce the bolt and fasten it. In case of difficult access materials special installation gun (TP STP) is recommended instead of normal gun (TP STG)



■ Installation Parameters

Base material thickness ranges are specified, depending on the value of this field, the maximum fixture thickness may vary.

Anchor type		Bolt metric M	Drill Diameter d_0	Bolt length L	Base Material Thickness h_{min}	Maximum fixture thickness t_{fix}
		mm	mm	mm	mm	mm
TP HAB421	TP HA421	M4	8	30	1 - 5	$17 - h_{min}$
TP HAB432	TP HA432			41	3 - 10	$22 - h_{min}$
TP HAB438	TP HA438			47	9 - 16	$30 - h_{min}$
TP HAB446	TP HA446			53	15 - 22	$33 - h_{min}$
TP HAB459	TP HA459			67	31 - 36	$52 - h_{min}$
TP HAB537	TP HA537	M5	10	46	5 - 14	$26 - h_{min}$
TP HAB552	TP HA552			59	6 - 18	$42 - h_{min}$
TP HAB565	TP HA565			72	16 - 33	$55 - h_{min}$
TP HAB580	TP HA580			89	33 - 46	$61 - h_{min}$
TP HAB637	TP HA637	M6	12	46	5 - 13	$25 - h_{min}$
TP HAB652	TP HA652			59	6 - 17	$38 - h_{min}$
TP HAB665	TP HA665			72	14 - 32	$49 - h_{min}$
TP HAB680	TP HA680			89	34 - 46	$78 - h_{min}$
-	TP HA865	M8	14	73	17 - 33	$47 - h_{min}$



■ Recommended Load

		Plasterboard panels						Plaster					
		e = 10mm		e = 12.5mm		e = 2 x 12.5mm		e = 10mm		e = 12.5mm		e = 2 x 12.5mm	
Anchor type		N _{rec}	V _{rec}	N _{rec}	V _{rec}	N _{rec}	V _{rec}	N _{rec}	V _{rec}	N _{rec}	V _{rec}	N _{rec}	V _{rec}
TP HAB421	TP HA421	0.20	0.50	0.20	0.50	-	-	0.20	0.50	0.30	0.60	-	-
TP HAB432	TP HA432	0.20	0.50	0.20	0.50	-	-	0.20	0.50	0.30	0.60	-	-
TP HAB438	TP HA438	0.20	0.50	0.20	0.50	-	-	0.20	0.50	0.30	0.60	-	-
TP HAB446	TP HA446	0.20	0.50	0.20	0.50	-	-	0.20	0.50	0.30	0.60	-	-
TP HAB459	TP HA459	0.20	0.50	0.20	0.50	0.30	0.90	0.20	0.50	0.30	0.60	0.50	0.80
TP HAB537	TP HA537	0.20	0.50	-	-	-	-	0.25	0.50	-	-	-	-
TP HAB552	TP HA552	0.20	0.50	0.20	0.50	-	-	0.30	0.60	0.50	1.00	-	-
TP HAB565	TP HA565	0.20	0.50	0.20	0.50	0.40	1.00	0.30	0.50	0.50	1.00	0.90	1.10
TP HAB580	TP HA580	0.20	0.50	0.20	0.50	0.40	1.00	0.30	0.50	0.50	1.00	0.90	1.10
TP HAB637	TP HA637	0.15	0.40	-	-	-	-	0.20	0.50	-	-	-	-
TP HAB652	TP HA652	0.20	0.50	0.20	0.50	-	-	0.25	0.80	0.30	1.00	-	-
TP HAB665	TP HA665	0.20	0.50	0.20	0.50	0.30	0.90	0.25	0.80	0.30	1.00	0.80	1.80
TP HAB680	TP HA680	0.20	0.75	0.20	0.75	0.30	0.90	0.25	0.80	0.30	1.00	0.80	1.80
-	TP HA865	0.20	0.50	0.20	0.50	0.40	1.00	0.40	0.90	0.80	1.20	0.90	1.70

Tension and Shear values must be considered separately.