

# TP STEEL FRAME ANCHOR

TP FAS

## ■ Product Description

- TP FAS is a metal frame anchor, excellent for the spaced fixing and fireproof application
- Suitable for both solid base material (concrete, stone, solid brick, solid block, etc.) and for hollow base material (hollow brick, perforated brick, etc.)
- Anti-spin lateral wings to avoid the anchor from spinning while expanding

Item Number	Description	Size
TP 6341	TP Steel Frame Anchor	M06 x 72 ø 10
TP 6342	TP Steel Frame Anchor	M06 x 92 ø 10
TP 6343	TP Steel Frame Anchor	M06 x 112 ø 10
TP 6344	TP Steel Frame Anchor	M06 x 132 ø 10
TP 6345	TP Steel Frame Anchor	M06 x 152 ø 10
TP 6346	TP Steel Frame Anchor	M06 x 182 ø 10



\* (Inner Diameter) x (Shield Length) ø (Drill diameter) - mm

## ■ Application

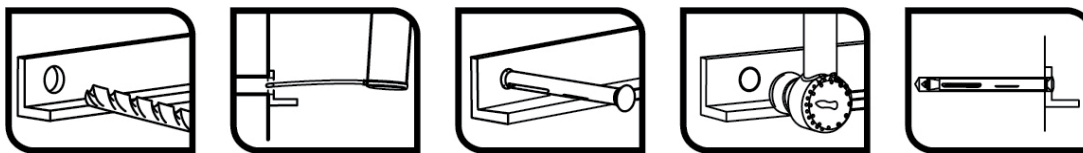
- Used for fixing window frames, door frames, squared timbers

## ■ Anchor Material

Name	Size	Component	Material
TP FAS	M6	Screw	Metal (Yellow zinc plated coating)
		Shield	Metal (Zinc plated coating)

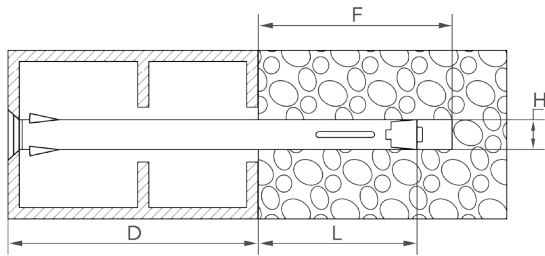
## ■ Installation Procedure

- Drill to the diameter and depth values indicated on the data chart. Do not drill in hammer mode on hollow base materials, to avoid inner damages to the base material. Reduce the speed when the drill bit is about to get to the hollow core of the base material
- Blow the hole clean of powder and drilling leftovers
- Put the material to be fixed in place. Insert the screw-plug set into the hole through the material to be fixed up to the plug's collar
- Screw the bolt until the plug has expanded. Be careful not to exceed the torque, to avoid damages to the plug or the base material



## ■ Installation Parameters

Item Number	Size	Bolt Length	Drill Diameter H	Minimum drilling depth F	Effective anchorage depth L ≥	Maximum fixture thickness D	Torque
		mm	mm	mm	mm	mm	Nm
TP 6341	M06 x 72 ø 10	85	10	60	40	40	4
TP 6342	M06 x 92 ø 10	105				60	
TP 6343	M06 x 112 ø 10	125				80	
TP 6344	M06 x 132 ø 10	145				100	
TP 6345	M06 x 152 ø 10	165				120	
TP 6346	M06 x 182 ø 10	195				150	



## ■ Recommended Load

### Maximum Recommended Load in Concrete (Nrecom)

Item Number	Size	Tension	Shear
		kg	kg
TP 6341	M06 x 72 ø 10	170	24
TP 6342	M06 x 92 ø 10		
TP 6343	M06 x 112 ø 10		
TP 6344	M06 x 132 ø 10		
TP 6345	M06 x 152 ø 10		
TP 6346	M06 x 182 ø 10		